

# **Brigade Administration & Support System (BASS)**

**Version 2.1.1**

Copyright © 2009-2014 by Mark Hessling <mark@rexx.org>.

This material may be distributed only subject to the terms and conditions set forth in the Open Publication License, v1.0 or later (the latest version is presently available at <http://www.opencontent.org/openpub/>).

# Table of Contents

1 Overview.....	3
1.1 Infrastructure Requirements.....	3
2 Administration Manual.....	4
2.1 Installation.....	4
2.1.2 Windows.....	4
2.1.3 Linux.....	6
2.1.4 MySQL Configuration.....	7
2.1.4.1 MySQL on Windows.....	7
2.1.4.1.1 Create bass database and username.....	7
2.1.4.1.2 Create BASS tables.....	7
2.1.4.2 MySQL on Linux or MacOS X.....	8
2.1.4.2.1 Create BASS tables.....	8
3 Using BASS.....	9
3.1 Initial Setup.....	9

# 1 Overview

BASS is a desktop application that records and reports on information used within a RFSQ Rural Fire Brigade.

## ***1.1 Infrastructure Requirements***

BASS can run on a number of platforms; Windows, Linux and MacOS X. It stores its data in a relational database; either MySQL or using an embedded version of SQLite.

The choice of database depends on how many computers BASS is intended to run. Where a Brigade has multiple computers on which BASS is intended to be run, then an instance of MySQL needs to be installed on one of the computers. Where a single machine is to be used, the use of SQLite is recommended.

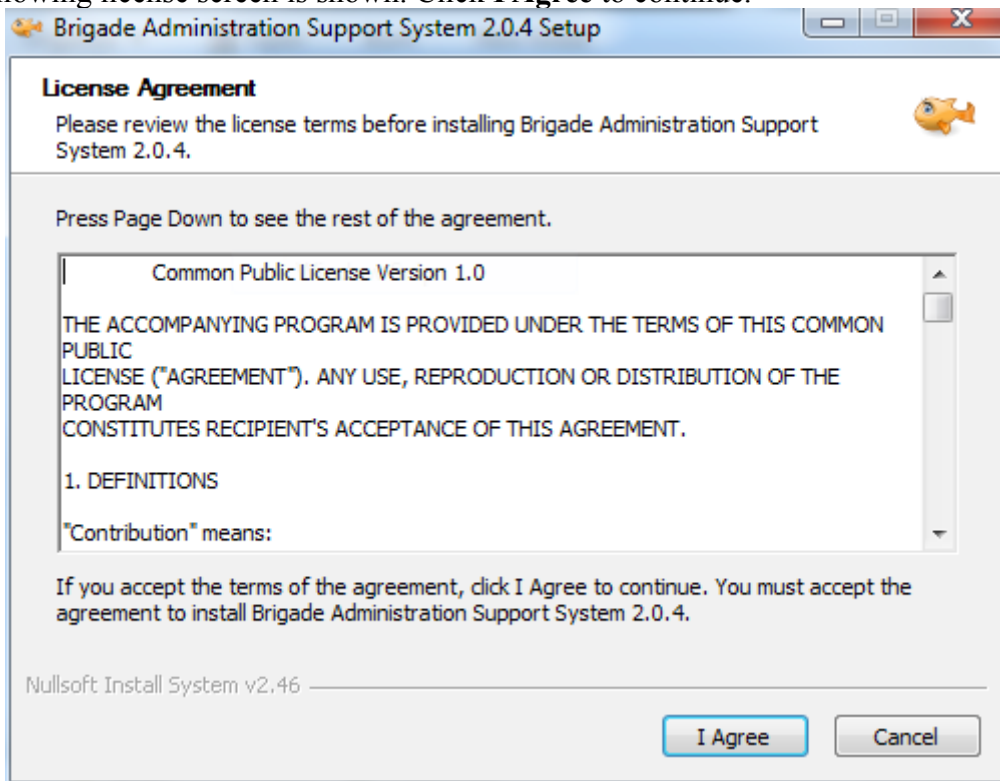
## 2 Administration Manual

### 2.1 Installation

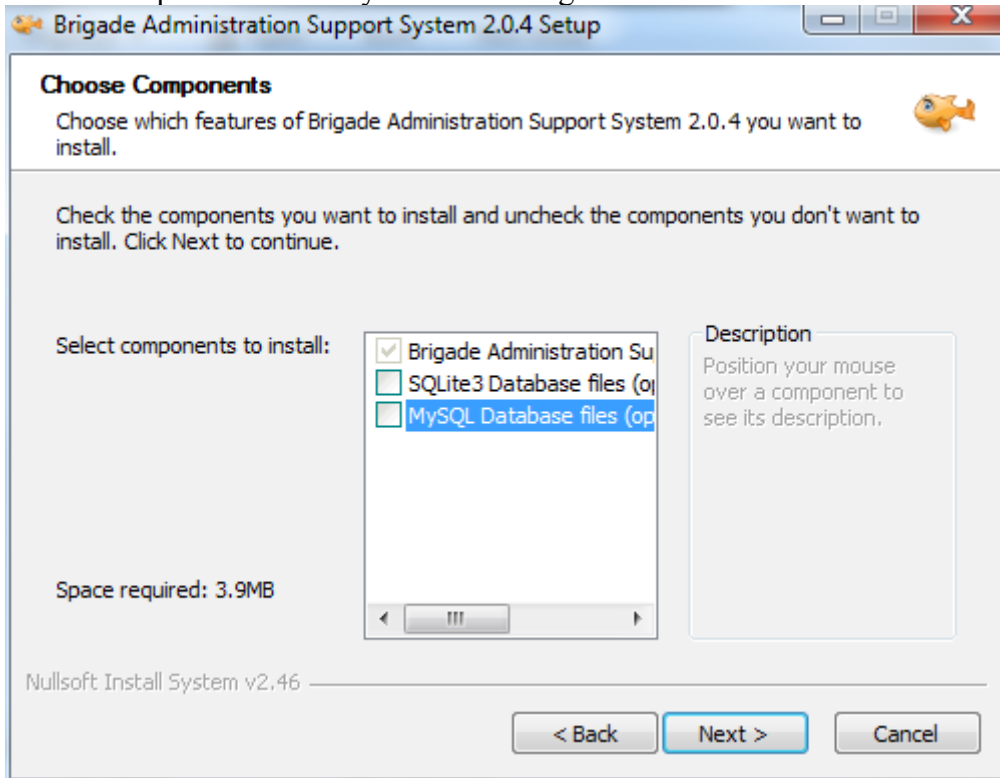
#### 2.1.1

#### 2.1.2 Windows

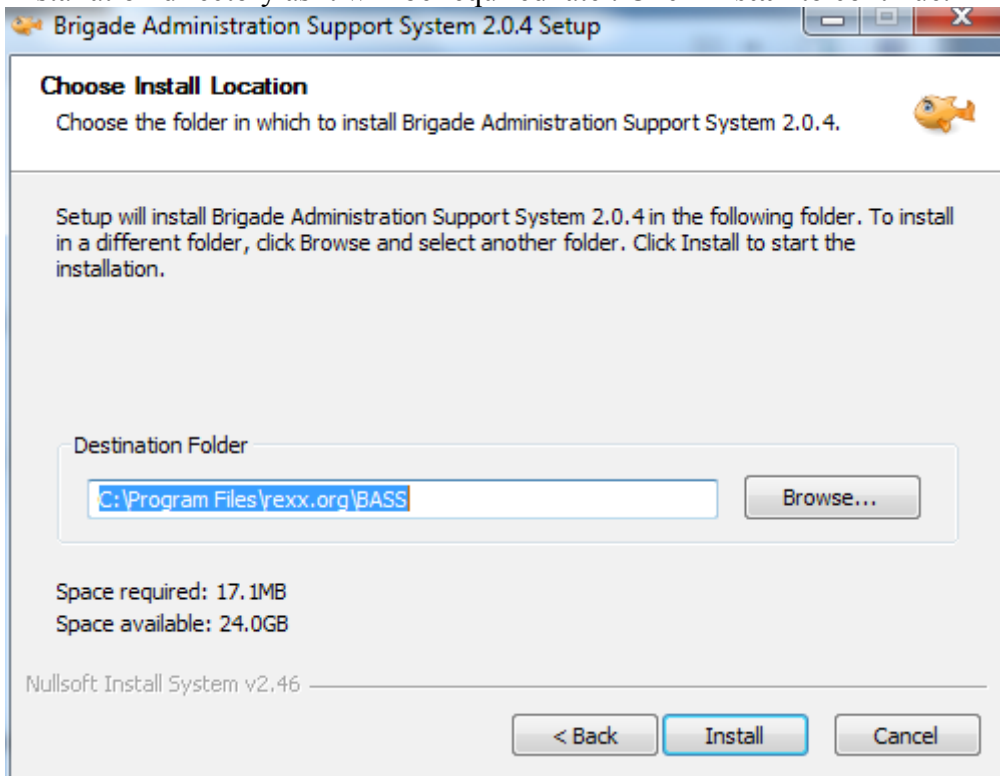
BASS will be supplied as a self-executing installer package. Double-click the installation package and the following license screen is shown. Click **I Agree** to continue.



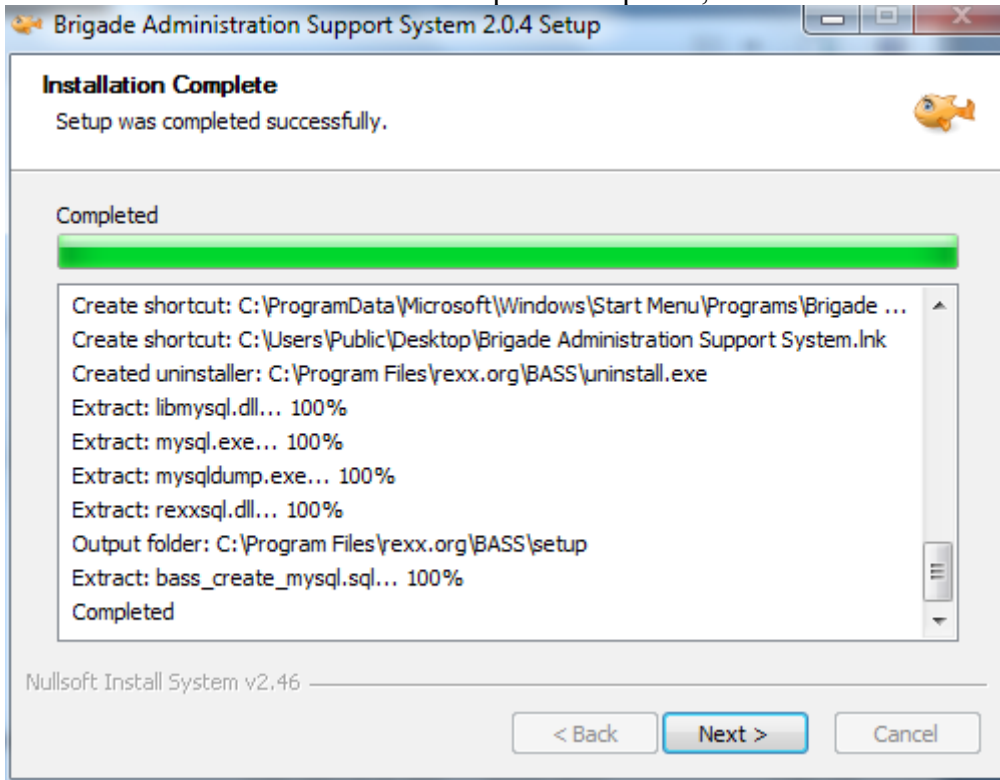
Select which database platform which you intend using for BASS and click **Next** to continue.



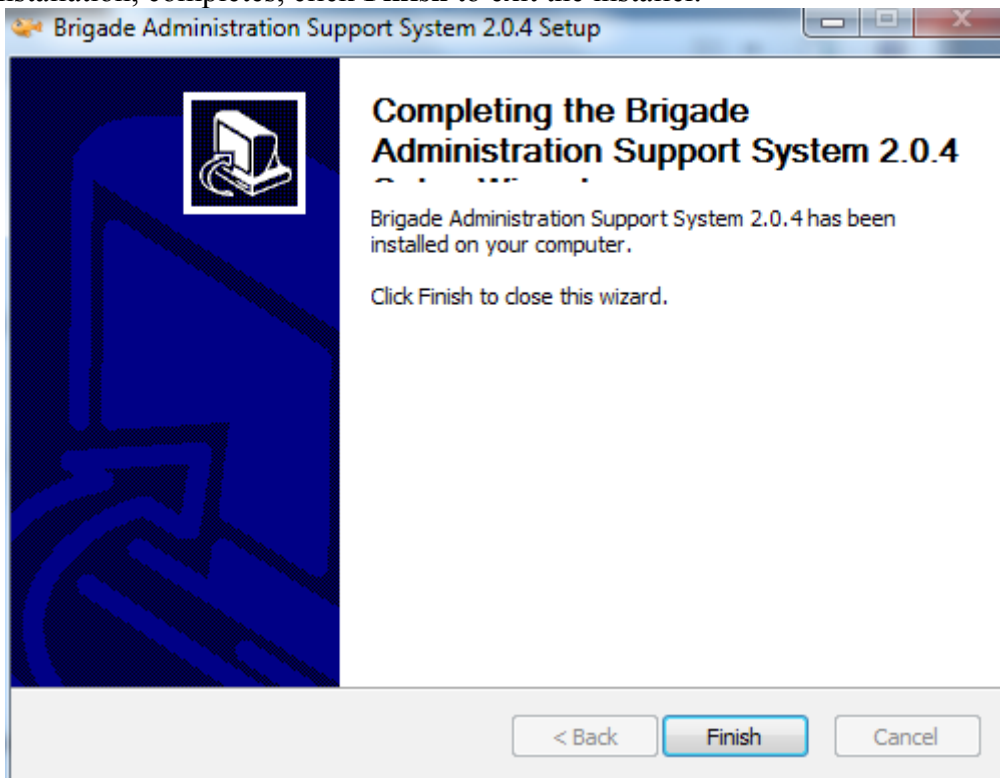
By default, the installation package will suggest that BASS be installed in “C:\Program Files\rexx.org\BASS” as shown below. This can be changed, however, the location that is chosen **must** be able to be written to by the BASS server. If running BASS with a MySQL server, take note of the installation directory as it will be required later. Click **Install** to continue.



A progress window will be shown. Once the setup has completed, click **Next**.



Once the installation, completes, click **Finish** to exit the installer.



If you chose MySQL as the database platform, you need to install the BASS database tables as explained in Section 2.1.4 MySQL Configuration.  
If using SQLite as the database platform, an empty database file has been installed and no further setup is required.

### 2.1.3 Linux

To be done.

## 2.1.4 MySQL Configuration

Where BASS is to be used with MySQL, the latest version of MySQL should be installed. The actual installation of MySQL is not covered in this document, however the creation of the BASS database tables is covered. You will need to know the password for the MySQL user: **root**, that was created when MySQL was installed.

A MySQL database *username* with privileges to create tables is required. The *username* **bass** is suggested, but not mandatory, as the database *username* and *password* is specified in the BASS configuration. The MySQL *username* must also have full access to a MySQL database schema. This schema name must be *bass*. Following are instructions for creating the BASS database and **bass** *username*.

The following instructions assume a BASS *username* of **bass** with a *password* of **Password1** and MySQL running on the server with IP address of **10.0.0.1**. Change as necessary for your installation. Text in **bold** are the commands required to be executed.

### 2.1.4.1 MySQL on Windows

Run a Windows Command Prompt and issue the commands highlighted. Note that the version of MySQL may be different to that used below.

#### 2.1.4.1.1 Create bass database and username

```
C: > cd "\\Program Files\MySQL\MySQL Server 5.6\bin"  
C:\Program Files\MySQL\MySQL Server 5.6\bin> mysql -u root -p -h 10.0.0.1  
Enter password: ***** ← this is password for MySQL username: root  
mysql> create database bass;  
mysql> grant all on bass.* to 'bass'@'%' identified by 'Password1';  
mysql> flush privileges;  
mysql> quit;
```

#### 2.1.4.1.2 Create BASS tables

```
C: > cd "\\Program Files\MySQL\MySQL Server 5.6\bin"  
C:\Program Files\MySQL\MySQL Server 5.6\bin> mysql -u bass -p -h 10.0.0.1 bass <  
"c:\program files (x86)\rexx.org\bass\setup\bass_create_mysql.sql"  
Enter password: ***** ← this is password for MySQL username: bass
```

### 2.1.4.2 MySQL on Linux or MacOS X

From a command line prompt type the commands highlighted.

```
$ mysql -u root -p -h 10.0.0.1
```

Password: **\*\*\*\*\*** ← this is password for MySQL *username*: **root**

```
mysql> create database bass;
```

```
mysql> grant all on bass.* to 'bass'@'%' identified by 'Password1';
```

```
mysql> flush privileges;
```

```
mysql> quit;
```

#### 2.1.4.2.1 Create BASS tables

```
$ mysql -u bass -p -h 10.0.0.1 bass < bass_create_mysql.sql
```

Password: **\*\*\*\*\*** ← this is password for MySQL *username*: **bass**

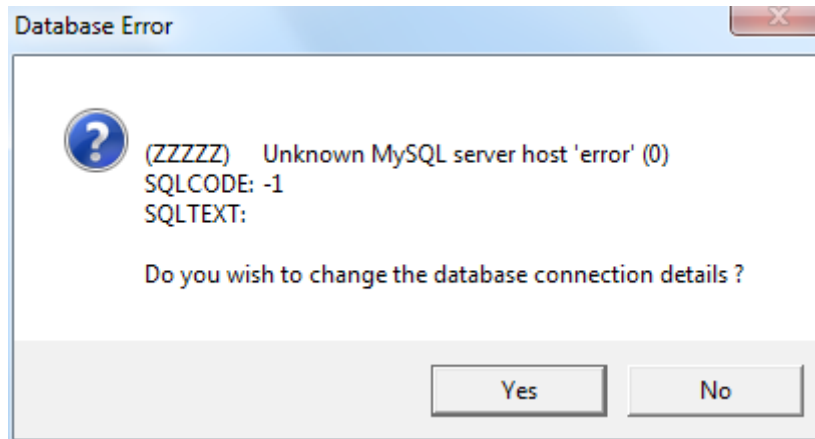


### 3 Using BASS

*Before using BASS, ensure that BASS setup has completed successfully especially if using MySQL as the database platform.*

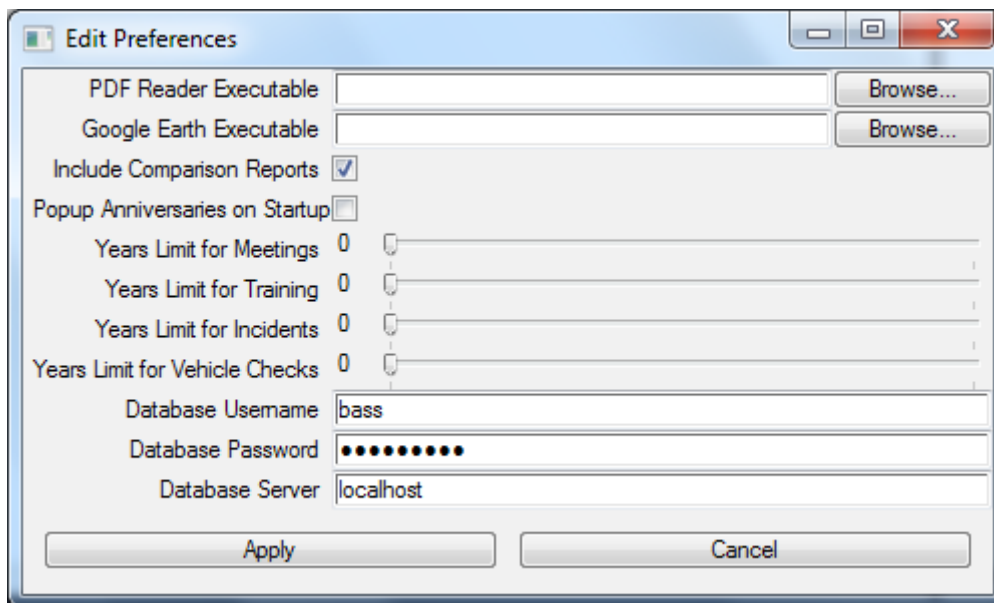
#### 3.1 Initial Setup

The first time BASS runs with a MySQL database it will fail to connect to the MySQL database because it doesn't know the connection details. The following screen will appear:

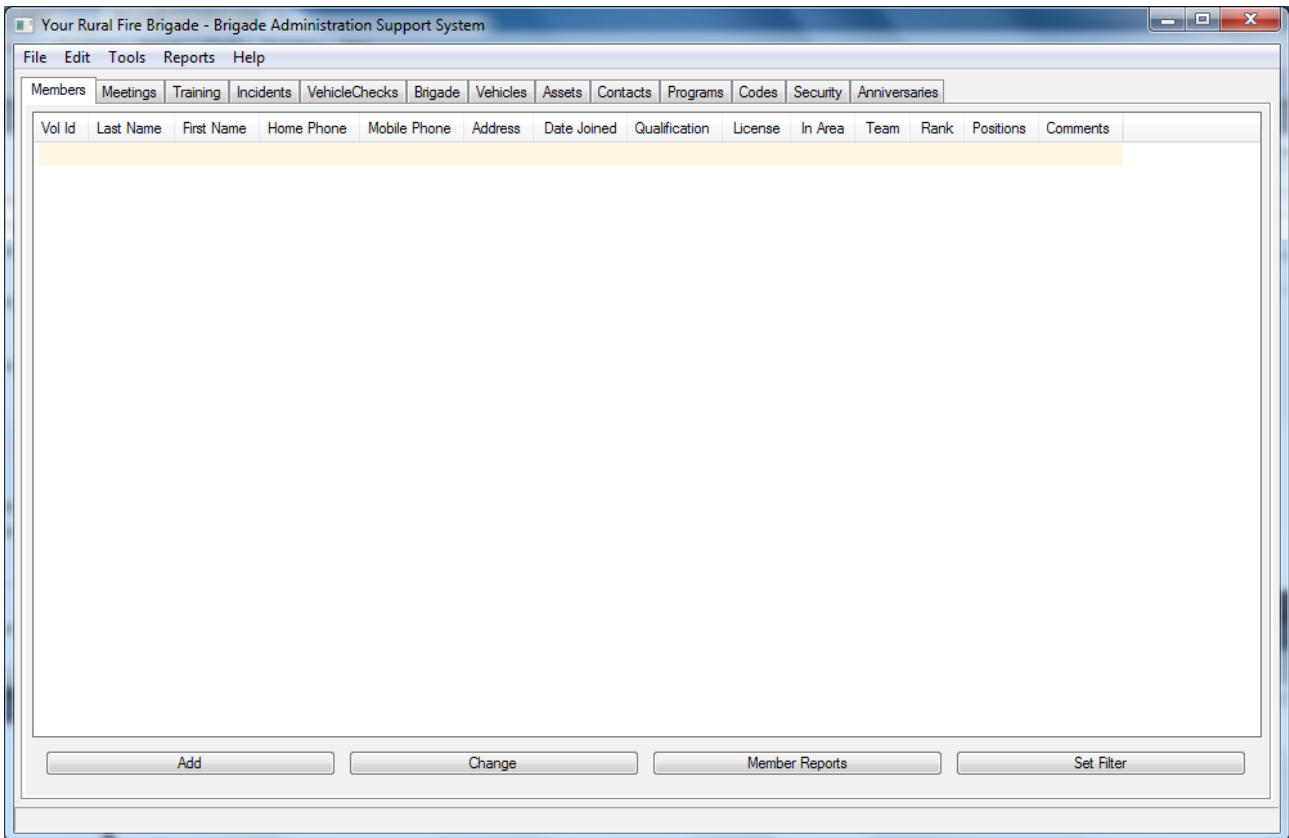


Click **Yes** to change the BASS Preferences including the MySQL Connection details. Clear the **error** strings and set the *PDF Reader* and *Google Earth Executables* to valid programs, or leave blank as shown below.

Set the *Database Username*, *Password* and *Server* values to those used when setting up MySQL Server.



Click **Apply** to save the settings. On a successful connection to MySQL the following screen will appear. This screen will be the first screen to display if using SQLite.



Click on the **Brigade** tab to configure details about your Brigade before adding any other data. You will need to come back to the **Brigade** page once you have members added who fill official positions in your Brigade.

